



Product Description

Thank you for buying our product **MURAQEB-Electricity Pro**.

MURAQEB-Electricity Pro consists of one Main Unit and comes in different models:

- 13A MK Socket
- 16A GR Socket
- 100A for main line monitoring
- 16A/32A Industrial Socket
- Other models are also available upon request



The Main Unit has a Power Meter inside which collects Electrical Measurements. The Main Unit will then upload these measurements to the cloud. There is no local storage for **MURAQEB-Electrical Pro**, the local storage feature is available for **MURAQEB-Electrical Advanced**.

The Electrical Measurements include the following Attributes: Voltage - Current - Power – Frequency - PF & **Energy Consumption (kWh)**.

MURAQEB connects to the internet via WIFI.

MURAQEB can be monitored via your PC/mobile from local network or over the Internet.

MURAQEB Pro can issue alerts for high/low Voltage (V), high/low Power (W), and High Energy Usage (kW.h). **MURAQEB Pro** can send these alerts over emails as per your preferred settings (SMS Messages & Phone Calls are only for **MURAQEB Advanced**).

MURAQEB can present measurements in Excel format and graphs.

MURAQEB uses a High-Accuracy Meter of class 0.5 fitted inside the Main Unit.



Warranty

- Product warranty: 2 years.
- This product is warranted to be free of defects in material and workmanship during the warranty period starting from the date of purchase.
- This warranty does not extend to any defect, malfunction or failure caused by the below. In such cases, AFKAR DIGITAL shall not be liable for any replacement or any compensation caused by the incompliance or misuse of the device:
 - The misuse which is not complying with the Safe Operating Instructions.
 - Malfunction related to over-voltage/instability of the AC Electricity.

Safe Operation Instructions

Please read the Instructions for Safe Operation carefully before using this product.

- Keep the Unit out of reach from children or infirm persons.
- Take care while handling this product to avoid any mechanical or electrical damage.
- Ensure that the Main Unit is mounted in a stable horizontal or vertical position as per the instructions.
- **MURAQEB** is for Indoor use only. Outdoor use is strictly prohibited.
- DO NOT expose **MURAQEB** to rain as it will result in electrical hazards.
- DO NOT install **MURAQEB** in a dusty place.
- DO NOT expose **MURAQEB** to water or moisture.
- DO NOT expose **MURAQEB** to high intensity light sources (e.g., xenon flash or laser).
- DO NOT expose **MURAQEB** to heat from any source and DO NOT expose to fire.
- Clean the Unit using a dry cloth.
- Do Not try to open the Unit to avoid shock Hazards due to high Voltage AC240V
- Do Not try to open the Unit as this will result in cancelling Warranty
- Do Not try to install **MURAQEB** Power 100A (for main line) without the help of a qualified technician.

Disposal

Do not dispose electrical appliances as unsorted municipal waste, use separate collection facilities. Contact your local government for information regarding the collection systems available. If electrical appliances are disposed in landfills or dumps, hazardous substances can leak into the groundwater and get into the food supply chain, damaging your health and well-being.

Compliance

CE / FCC



1. Installation

You can learn more about Installing & Operating **MURAQEB** by viewing the Tutorial Videos form our website:

<http://www.afkardigital.com> >> Products >> Mini Products



1. Open and check what is inside your **MURAQEB** box:

- Product Description, Warranty, & Safe Operation Manual
- **MURAQEB** Unit as per your model ordered, some models are shown below



2. Mounting of **MURAQEB**, Options are:

- Horizontal mounting on a clean surface
- Vertical mounting on a D25 rail

Installing **MURAQEB** 13A-MK / 16A-GR

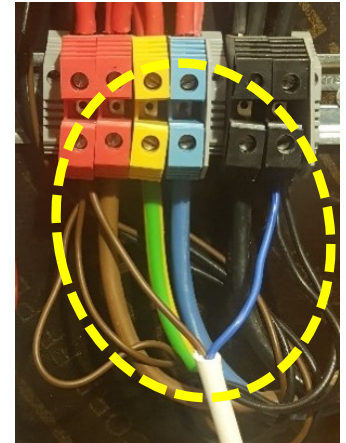
3. Connect the AC Plug to a power socket, then connect the device you want to monitor its Power and Energy Consumption to **MURAQEB** socket.

Installing MURAQEB 100A for Main Line

Warning: Do Not try to install MURAQEB Power 100A without the help of a qualified technician

Warning: Disconnect electricity from the Main Breaker before starting installation

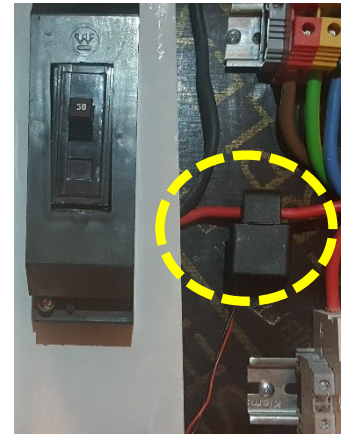
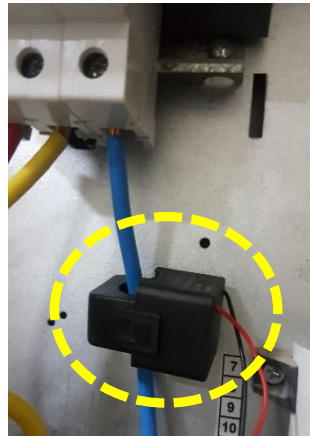
4. Connect the 2 wires of MURAQEB to AC220 Line & Neutral inside the MDB as indicated in picture aside.



5. Carefully place the Current Transformer (CT) around the Main Line as indicated in the example pictures aside. Make sure you do not drop the CT while handling.

6. The CT can be placed in any direction around the Main line.

7. Check that the CT is fully closed.

Note:

In case MURAQEB is disconnected from electricity, the Energy Counter is preserved.



2. Configuration

2.1. Creating your Cloud Account

8. In your web browser, type <https://muraqeb.smarturdon.com/>

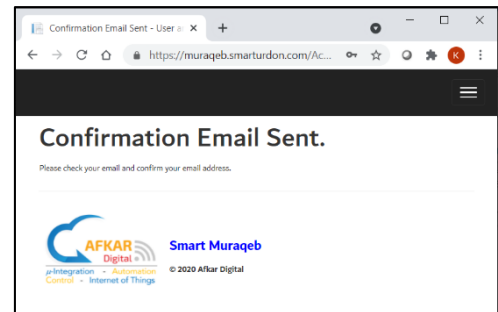
9. Click on **Register as a new user**.

- Fill in **Username / Password**
- Fill in a valid **email address** & a working **mobile number**

Note: By filling a valid phone number you will receive important information about your product thru SMS messages.

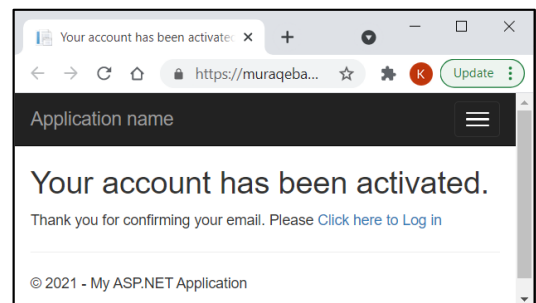
10. Click on **Register**.

11. A confirmation email will be sent to your inbox. For GMAIL, this might take up to ~3min. Pls also check your **Junk/spam** folders.



12. Once you receive the email, click on the link provided to activate your account.

13. If you see as in the aside, it means your account has been created successfully.



2.2. Adding **MURAQEB Pro** to your Cloud Account

14. In your web browser, type <https://muraqeb.smarturdon.com/> and login to your account which you have just created in the previous step.

15. To start adding **MURAQEB** to your account, click on “+”

16. Fill in the Serial No. of **MURAQEB** which is labeled at the back of the Main Unit, then click on “**Check**”.





17. If the Serial No. you filled is correct, you will be asked to fill the name of the Unit.

18. Click on “**Add**” to add this **MURAQEB** to your account.

Module Serial Number	615703520199026
No. of Sensors	1

19. You can now see your **MURAQEB** device listed in your Cloud Account.

Module Name	Module Serial Number	Module Type	No. of Sensors	Last Time Seen	Web Access Expiry	Storage Period	
Store No.1	615703520199026	Electrical Power Monitoring	1	2021-06-04 07:25:43 PM	2021/12/27	14 Day	

2.3. Accessing & Activating **MURAQEB Pro**

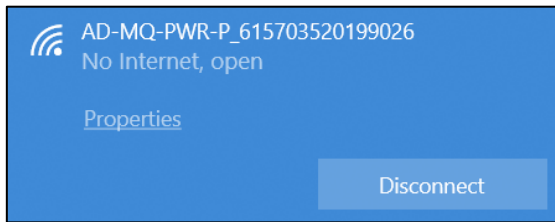
20. Ensure that the Main Unit is connected to the AC adapter.

21. Check available WIFI networks from your PC or mobile. You should see the WIFI of **MURAQEB** like the example aside. The WIFI of **MURAQEB** will show up after ~one minute from powering the Main Unit and it will include the serial No. of your **MURAQEB** at the end of the name.

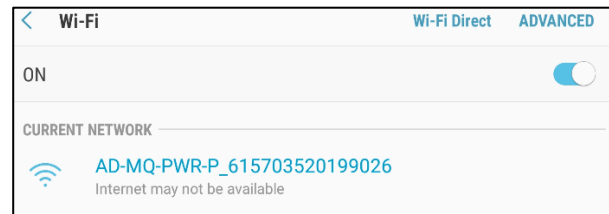
AD-MQ-PWR-P_615703520199026

22. Select the WIFI of **MURAQEB**, then fill in password **12345678**

23. To ensure you camped on the WIFI of **MURAQEB**, the network view should be like below.



Computer (PC)

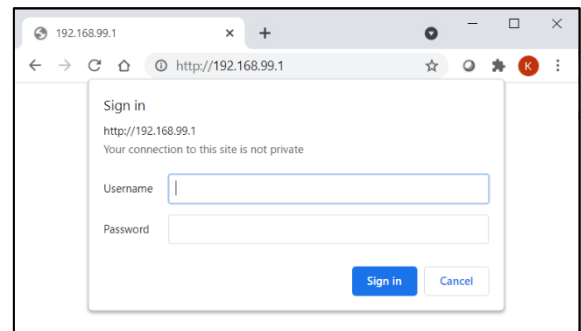


Mobile

24. In your web browser, type <http://192.168.99.1> to access MURAQEB thru the local network. Login as:

Username: **admin**

Password: **admin** (Later you can change the password)

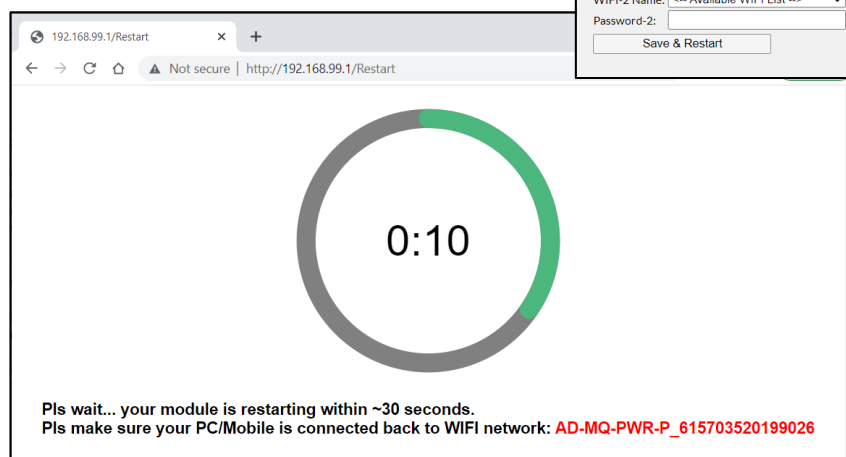
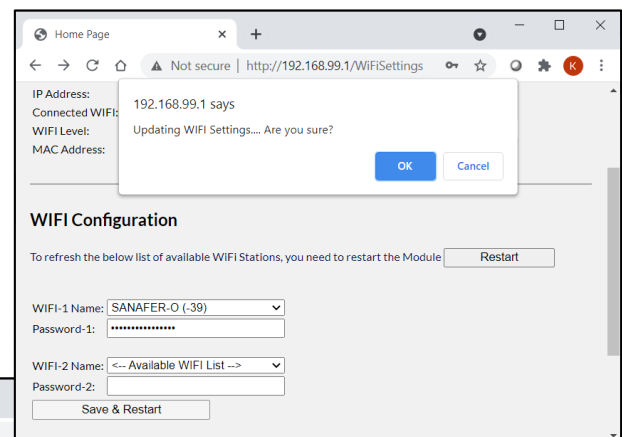


25. Your browser will show you the **WIFI Configuration page**. Here you need to define the local WIFI network inside **MURAQEB**. Initially, under **Network Status** there will be no defined WIFI, and the **Saved WIFI 1 & 2** fields will be both empty.



26. Under **WIFI Configuration**

- Select **WIFI 1 Name**, fill in **Password**, and click on **Save & Restart**.
- **MURAQEB** will reboot within 30sec
- Ensure you mobile/PC will camp on the WIFI of **MURAQEB** again after **MURAQEB** has finished rebooting.

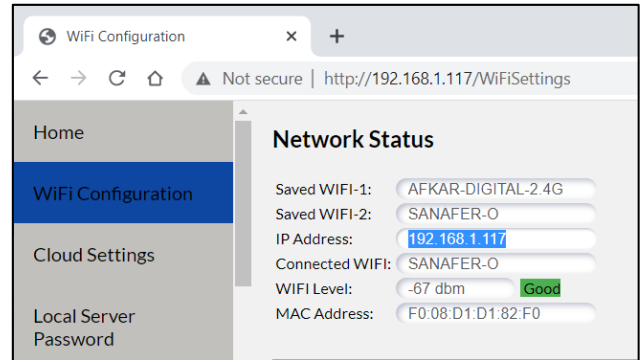




27. Login again as before:

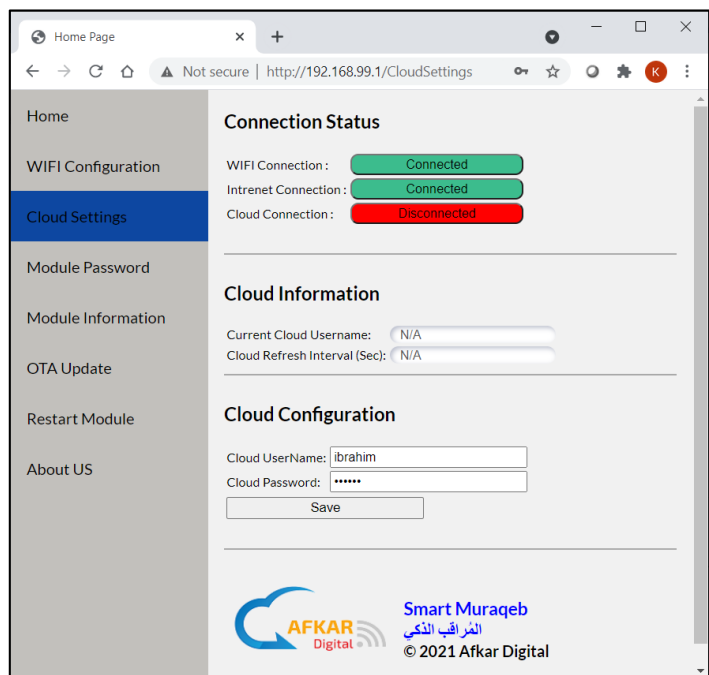
- Username: **admin**
- Password: **admin**

28. Under **Network Status** you will see a valid **IP address** and the name of the WIFI you selected. If not, then check your WIFI settings again (Step 26).

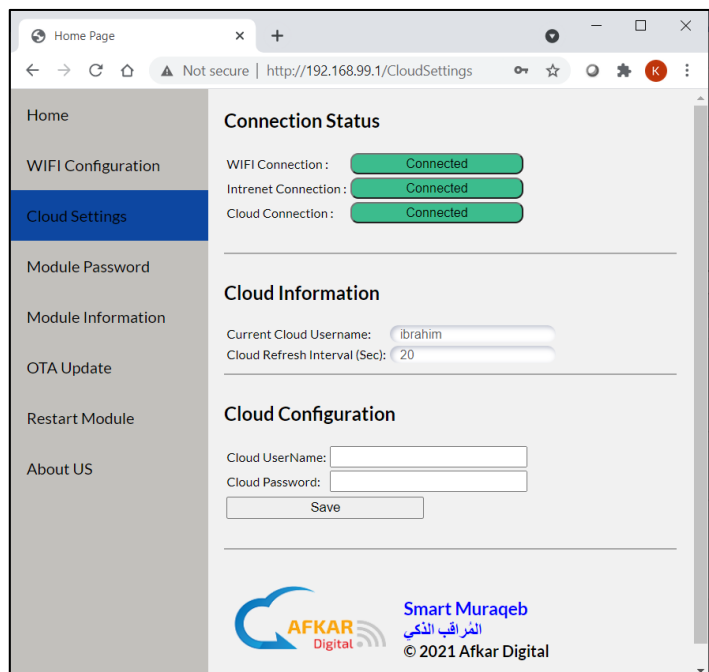


29. Go to **Cloud Settings**. Initially there will be no Cloud Information.

30. Under **Cloud Configuration** Fill in same Username and Password when you created your account (as in step 9). Click then on **"Save"** and confirm.



31. If account information you filled is correct, **MURAQEB** will show "Connected" in the **Cloud Connection** field. Else you need to check (Step 30) once again



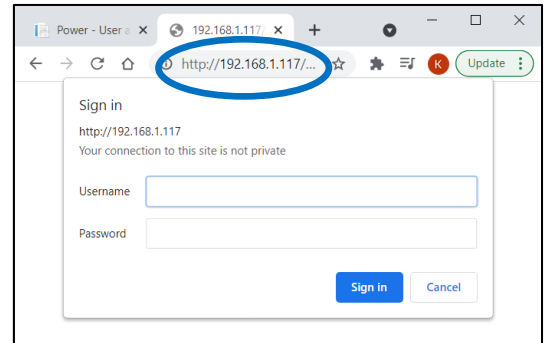


2.4. Monitoring MURAQEB Pro from Local Network

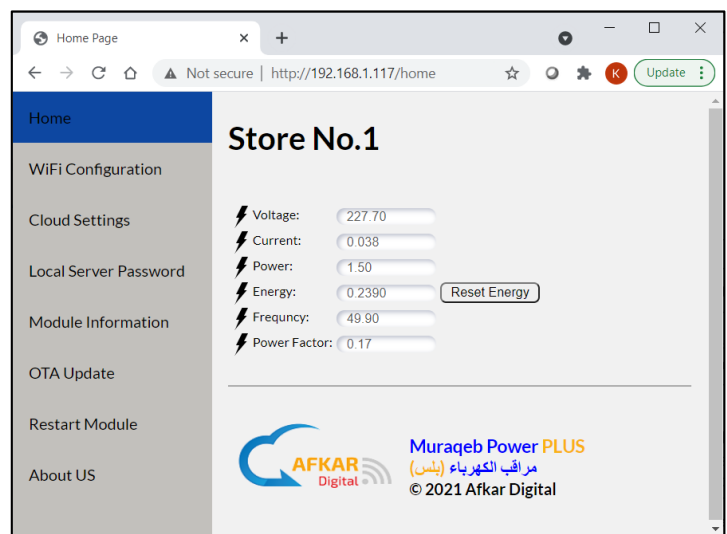
32. Reconnect your PC/mobile back to your local WIFI network (same one defined for MURAQEB)

33. In your web browser, fill in the IP address of MURAQEB (found in step 28). Login as before:

- Username: **admin**
- Password: **admin**



34. You will be able to see all Temperature Sensors connected to MURAQEB from the local WIFI.



2.5. Monitoring MURAQEB Pro thru the Internet

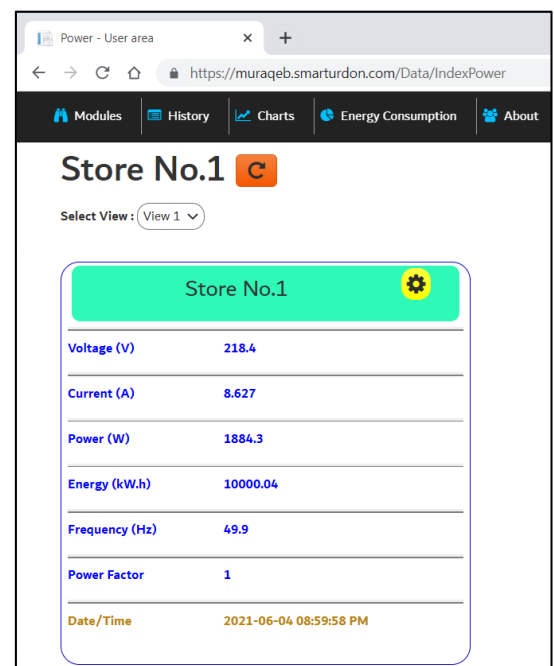
35. In your browser, type <https://muraqeb.smarturdon.com> to access your account.

36. Login with your account credentials.

37. Select which MURAQEB you want to monitor from the list.

38. You should be able now to monitor MURAQEB you selected thru the Internet.

39. To add another MURAQEB to your account, you need to repeat Parts (2.2 and 2.3) only.





3. Turning OFF MURAQEB Pro

If you do not want to use MURAQEB for some period, do the following:

For MURAQEB 13A-MK / 16A-GR

Disconnect the device from MURAQEB socket (if any), then disconnect MURAQEB from the AC source.

For MURAQEB 100A Main Line

To avoid Shock Hazards, you need a qualified technician to uninstall MURAQEB









In case MURAQEB is disconnected from electricity, the Energy Counter is preserved.

4. Operating MURAQEB Pro

You can learn more about Operating MURAQEB and its Features by viewing the Tutorial Videos form our website:

[>> Products >> Mini Products](http://www.afkardigital.com)



-  Creating Cloud Account
-  Configuring MURAQEB
-  Displaying Graphs / Tables
-  Selecting Views
-  Setting Refresh Timer/Storage Timer
-  Upgrading MURAQEB Software
-  Restarting and Shutting down MURAQEB
-  Other Settings, and more...



Contact us for any queries or information related to MURAQEB

Technical Issues

Any Further Queries & Information