



Product Description

Thank you for buying our product **MURAQEB-Electricity Advanced**.

MURAQEB-Electricity Advanced consists of one Logger Unit and comes in different models:

- 13A MK Socket
- 16A GR Socket
- 100A for main line monitoring
- 16A/32A Industrial Socket
- Other models are also available upon request



The Logger Unit has a Power Meter inside which collects Electrical Measurements and stores them inside **MURAQEB**. These measurements are also uploaded to the cloud.

The Electrical Measurements include the following Attributes: Voltage - Current - Power – Frequency - PF & **Energy Consumption (kWh)**.

MURAQEB connects to the internet via WIFI.

MURAQEB can be monitored via your PC/mobile from local network or over the Internet.

MURAQEB Advanced can issue alerts for high/low Voltage, high/low Current, high/low Power, low PF, and high Energy Usage (kW.h). **MURAQEB Advanced** can send these alerts over emails, SMS Messages, or Phone Calls as per your preferred settings.

MURAQEB uses a High-Accuracy Meter of class 0.5 fitted inside the Main Unit.



Safe Operation Instructions

Please read the Instructions for Safe Operation carefully before using this product.

- Keep the Logger Unit out of reach from children or infirm persons.
- Take care while handling this product to avoid any mechanical or electrical damage.
- Ensure that the Logger Unit is mounted in a stable horizontal or vertical position as per the instructions.
- **MURAQEB** is for Indoor use only. Outdoor use is strictly prohibited.
- DO NOT expose **MURAQEB** to rain as it will result in electrical hazards.
- DO NOT install **MURAQEB** in a dusty place.
- DO NOT expose **MURAQEB** to water or moisture.
- DO NOT expose **MURAQEB** to high intensity light sources (e.g., xenon flash or laser).
- DO NOT expose **MURAQEB** to heat from any source and DO NOT expose to fire.
- Clean the Logger Unit using a dry cloth.
- Do Not try to open the Unit to avoid shock Hazards due to high Voltage AC240V
- Do Not try to open the Unit as this will result in cancelling Warranty
- Do Not try to install **MURAQEB** Power 100A (for main line) without the help of a qualified technician.

Disposal

Do not dispose electrical appliances as unsorted municipal waste, use separate collection facilities. Contact your local government for information regarding the collection systems available. If electrical appliances are disposed in landfills or dumps, hazardous substances can leak into the groundwater and get into the food supply chain, damaging your health and well-being.

Compliance

CE / FCC



1. Installation

You can learn more about Installing & Operating **MURAQEB** by viewing the Tutorial Videos form our website:

<http://www.afkardigital.com> >> Products >> Mini Products



1. Open and check what is inside your **MURAQEB** box:

- Product Description, Warranty, & Safe Operation Manual
- **MURAQEB** Unit as per your model ordered, some models are shown below



2. Mounting of **MURAQEB**, Options are:

- Horizontal mounting on a clean surface
- Vertical mounting on a D25 rail

Installing **MURAQEB** 13A-MK / 16A-GR

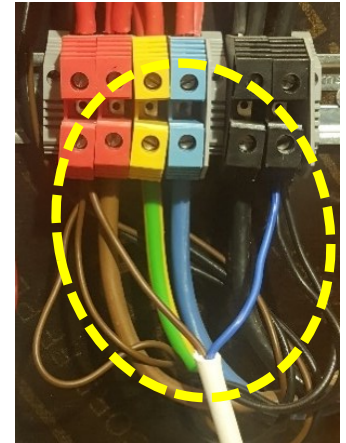
3. Connect the AC Plug to a power socket, then connect the device you want to monitor its Power and Energy Consumption to **MURAQEB** socket.

Installing **MURAQEB** 100A for Main Line

Warning: Do Not try to install MURAQEB Power 100A without the help of a qualified technician

Warning: Disconnect electricity from the Main Breaker before starting installation

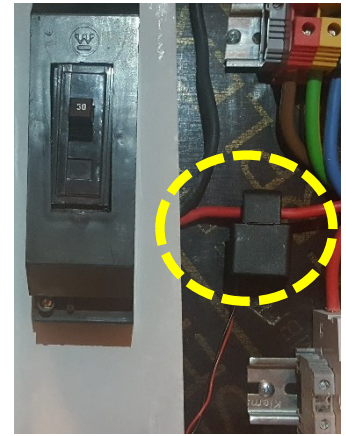
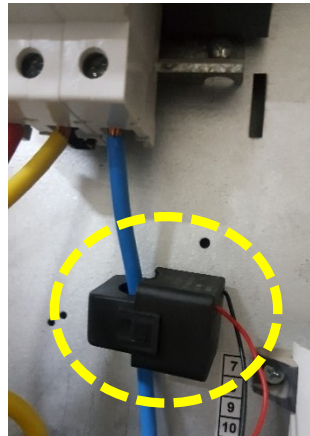
4. Connect the 2 wires of MURAQEB to AC220 Line & Neutral inside the MDB as indicated in picture aside.



5. Carefully place the Current Transformer (CT) around the Main Line as indicated in the example pictures aside. Make sure you do not drop the CT while handling.

6. The CT can be placed in any direction around the Main line.

7. Check that the CT is fully closed.

Note:

In case **MURAQEB** is disconnected from electricity, the Energy Counter is preserved.



2. Configuration

2.1. Creating your Cloud Account

8. In your web browser, type <https://hudhud.smarturdon.com/>

9. Click on **Register as a new user**.

- Fill in **Username / Password**
- Fill in a valid **email address** & a working **mobile number**

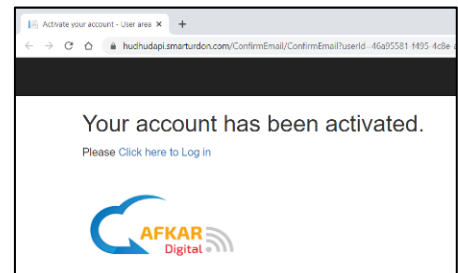
Note: By filling a valid phone number you will receive important information about your product thru SMS messages.

10. Click on **Register**.

11. A confirmation email will be sent to your inbox. For GMAIL, this might take up to ~3min. Pls also check your **Junk/spam** folders.

12. Once you receive the email, click on the link provided to activate your account.

13. If you see as in the aside, it means your account has been created successfully.



2.2. Adding **MURAQEB Advanced** to your Cloud Account

14. In your web browser, type <https://hudhud.smarturdon.com/> and login to your account which you have just created in the previous step.

15. Your subscription determines the number of users who can simultaneously access **MURAQEB** thru the internet. Select any user ID, later you can give names to the IDs for more convenience.

16. To start adding **MURAQEB** to your account, click on “+”

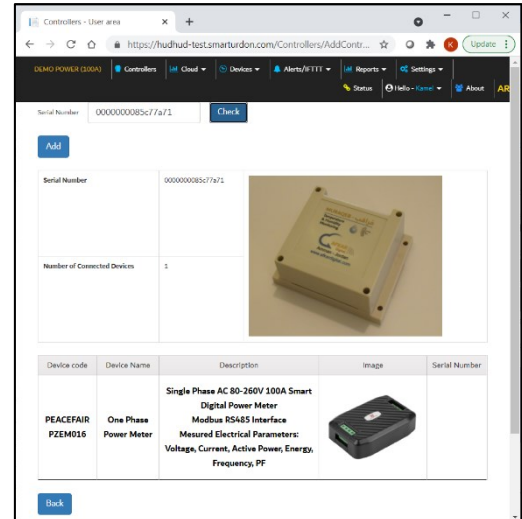
17. Fill in the Serial No. of **MURAQEB** which is labeled at the back of the Logger Unit, then click on “**Check**”.



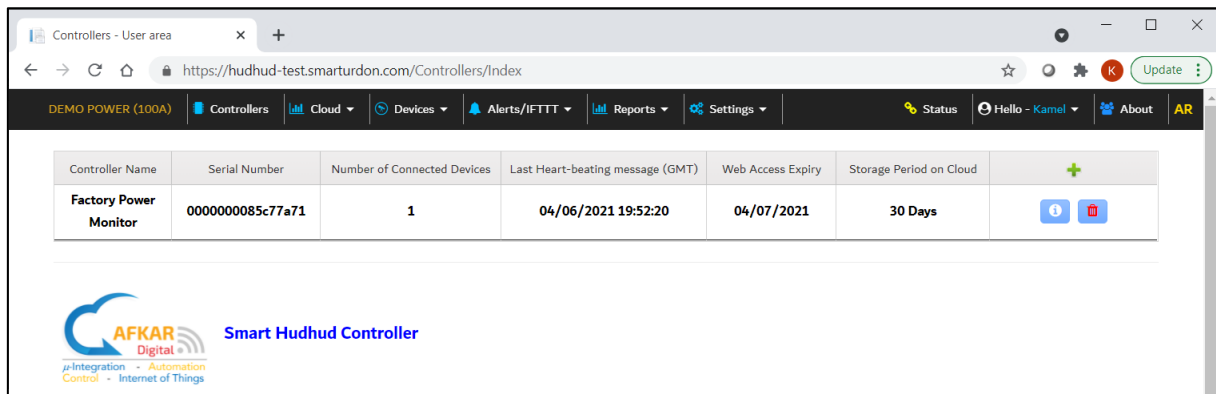


18. If the Serial No. you filled is correct, the pictures of **MURAQEB** (Logger Unit and Sensors) will be displayed along with other information.

19. Click on “Add” to add this **MURAQEB** to your account and then click on “Back”



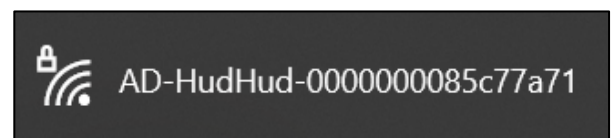
20. You can now see your **MURAQEB** device listed in your Cloud Account.



2.3. Accessing & Activating **MURAQEB Advanced**

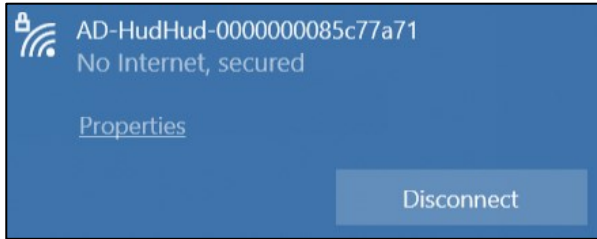
21. Ensure that the Logger Unit is connected to the AC adapter.

22. Check available WIFI networks from your PC or mobile. You should see the WIFI of **MURAQEB** like the example aside. The WIFI of **MURAQEB** will show up after ~one minute from powering the Logger Unit and it will include the serial No. of your **MURAQEB** at the end of the name.

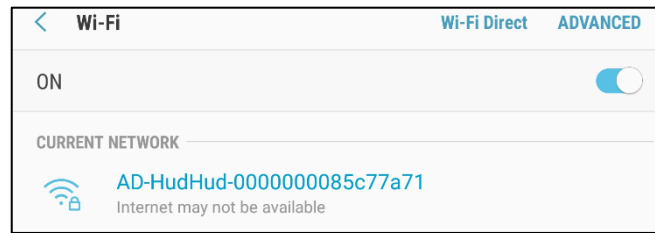


23. Select the WIFI of **MURAQEB**, then fill in password 12345678

24. To ensure you camped on the WIFI of **MURAQEB**, the network view should be like below.

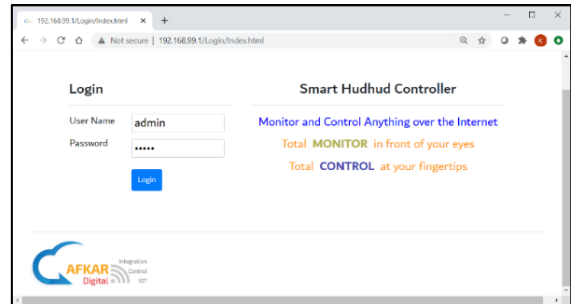


Computer (PC)

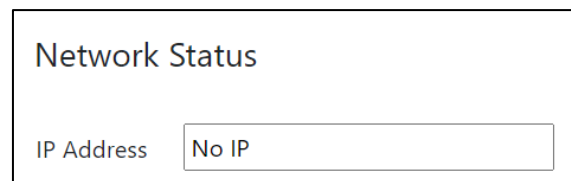


Mobile

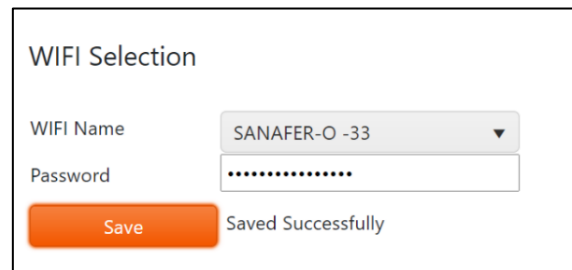
25. In your web browser, type <http://192.168.99.1> to access **MURAQB** thru the local network. Login as:
Username: **admin**
Password: **admin** (Later you can change the password)



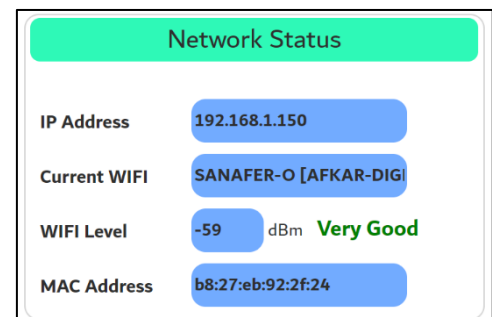
26. Your browser will direct you to the WIFI Setup page where you need to define the local WIFI network inside **MURAQB**. Initially, under **WIFI Network Status** there will be no defined WIFI, and the **WIFI IP address** of **MURAQB** will be showing **No IP**.



27. Under **WIFI Selection**
- Select **WIFI Name**, fill in **Password**, and click on **Save**.
 - If WIFI password you filled is correct, "**Saved Successfully**" will be prompted.



28. Refresh your browser page. Under **WIFI Network Status** you will see a valid IP address and the name of the WIFI you selected.



29. Go to **Settings >> Cloud Account**. Fill in same Username and Password when you created your account (as in step 9). Click then on "**Check**"



30. If account information you filled is correct, **MURAQEB** will prompt a successful message and will restart.

Controller ID : 00000005a0d0899

User Name:

Password:

Saved Successfully

Controller ID : 00000005a0d0899

User Name:

Password:

Program is restarted ...

2.4. Monitoring **MURAQEB Advanced** from Local Network

31. Reconnect your PC/mobile back to your local WIFI network (same one defined for **MURAQEB**)

32. By this time, **MURAQEB** should have finished restarting.

33. In your web browser, fill in the IP address of **MURAQEB** (found in step 28). Login as before:

- Username: **admin**
- Password: **admin**

192.168.1.150/Login/index.html

Not secure | http://192.168.1.150/Login/index.html

Login

Smart Hudhud Controller

Monitor and Control Anything over the Internet

Total **MONITOR** in front of your eyes

Total **CONTROL** at your fingertips

AFKAR Digital

34. You will be able to see all devices connected to **MURAQEB** from the local WIFI.

Not secure | http://192.168.1.150/

Favorites

Machines (Line1)

Voltage: 222.8 V

Current: 4.356 A

Power: 969.5 W

Energy: 1160.563 kWh

Frequency: 49.9 Hz

PowerFactor: 1

Over Power Alarm: OFF



2.5. Monitoring MURAQEB Advanced thru the Internet

35. In your browser, type <https://hudhud.smarturdon.com> to access your account.

36. Login and select the User ID/Name from the drop menu.

Select your user id

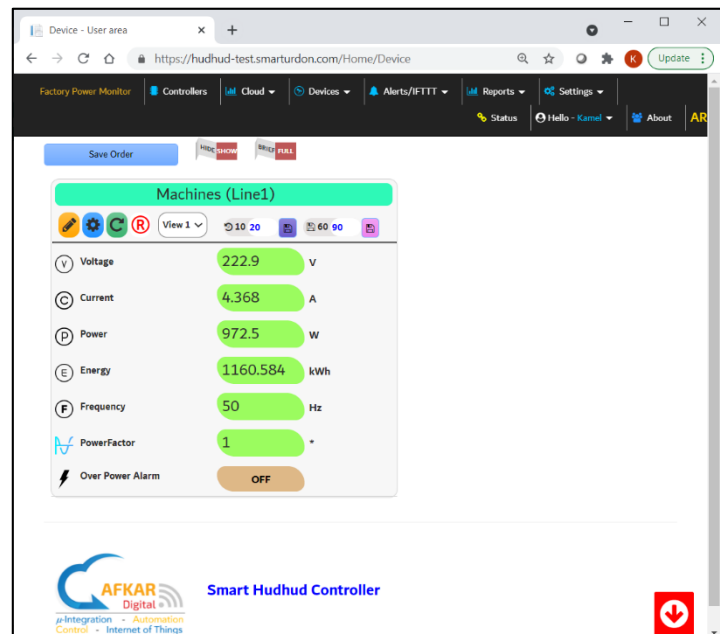
1 : Ibrahim
 1 : Ibrahim
 2 : Salem
 3 : Hesham

37. Select which MURAQEB you want to monitor from the list.

Controller Name	Serial Number	Number of Connected Devices	Last Heart-beating message (GMT)	Web Access Expiry	Storage Period on Cloud	
Factory Power Monitor	000000085c77a71	1	04/06/2021 19:52:20	04/07/2021	30 Days	

38. You should be able now to monitor MURAQEB you selected thru the Internet.

39. To add another MURAQEB to your account, you need to repeat Parts (2.2 and 2.3) only.



3. Shutting Down MURAQEB Advanced Safely

If you do not want to use MURAQEB for some period or need to move MURAQEB from one place to another. You need to do the following:

1. Login to MURAQEB, either from local network or remotely.
2. Go to **Settings >> Controller**. Scroll down to **Controller Management**.
3. Click on "Shut down the Device".
4. Wait for ~one minute, then disconnect MURAQEB from the AC source as follows:





For **MURAQEB** 13A-MK / 16A-GR:

Disconnect the device from MURAQEB socket (if any), then disconnect **MURAQEB** from the AC source.

For **MURAQEB** 100A Main Line

To avoid Shock Hazards, you need a qualified technician to uninstall **MURAQEB**

In case **MURAQEB** is disconnected from electricity, the Energy Counter is preserved.

4. Operating **MURAQEB** Advanced

You can learn more about Operating **MURAQEB** and its Features by viewing the Tutorial Videos form our website:

<http://www.afkardigital.com> >> Products >> Mini Products



- Creating Cloud Account
- Configuring **MURAQEB**
- Displaying Graphs / Tables
- Setting Alerts (IFTTT) for Email/SMS/Phone Calls
- Filling Usernames inside **MURAQEB**
- Checking your account balance
- Selecting Forms
- Making Favorites Menus
- Setting Refresh Timer/Storage Timer
- Setting Storage Period
- Upgrading **MURAQEB** Software
- Backing up/Restoring **MURAQEB** configuration to/from cloud
- Restarting, Rebooting, and Shutting down **MURAQEB**
- Other Settings, and more...



Contact us for any queries or information related to **MURAQEB**

Replacing Sensor Battery

Ordering more Sensors

Technical Issues

Any Further Queries & Information